

Professional Van Racking

Toyota ProAce

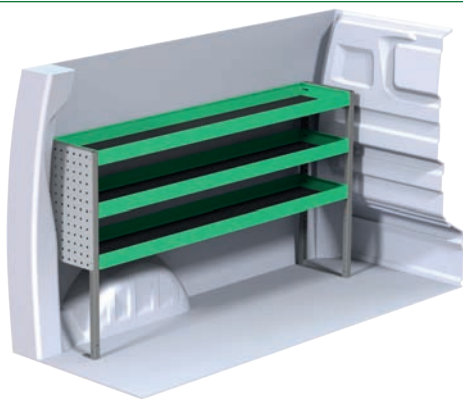


A place for everything.

www.systemedstrom.com

Toyota ProAce Compact

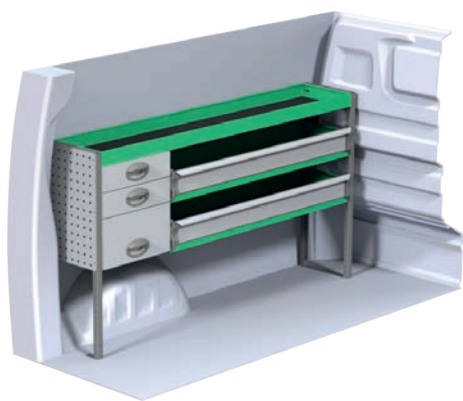
Recommended retail prices valid from 2018-01-01 until further notice. Mounting and VAT is excluded.
Suggested hours is the recommended mounting time for experienced retailers.



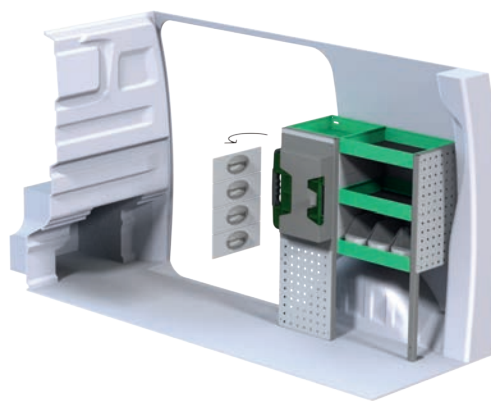
Art.No	LxDxH	Kg	Hr.	€
F41800	1632x300x890 mm	26	2,1	503,25



Art.No	LxDxH	Kg	Hr.	€
F41801	724x300x890 mm	29	2,9	635,00



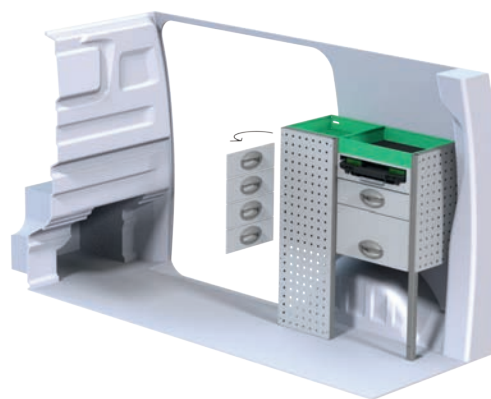
Art.No	LxDxH	Kg	Hr.	€
F41802	1632x300x890 mm	40	2,8	765,00



Art.No	LxDxH	Kg	Hr.	€
F41803	724x300x890 mm	36	3,2	789,00



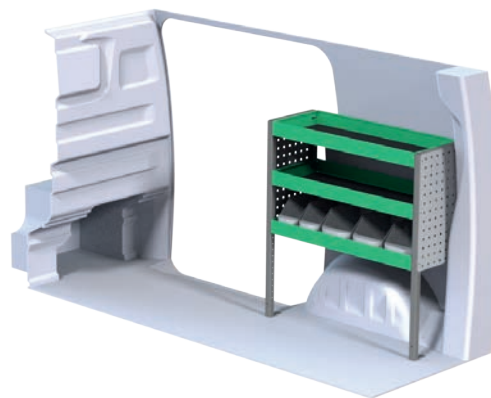
Art.No	LxDxH	Kg	Hr.	€
F41804	1632x300x890 mm	58	3,7	1 176,20



Art.No	LxDxH	Kg	Hr.	€
F41805	724x300x890 mm	40	2,8	915,00



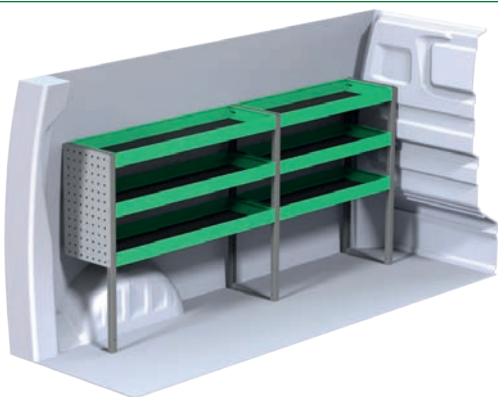
Art.No	LxDxH	Kg	Hr.	€
F41806	1600x300x890 mm	60	3,3	1 243,50



Art.No	LxDxH	Kg	Hr.	€
F41807	848x300x890 mm	20	2,3	401,75

Toyota ProAce Medium

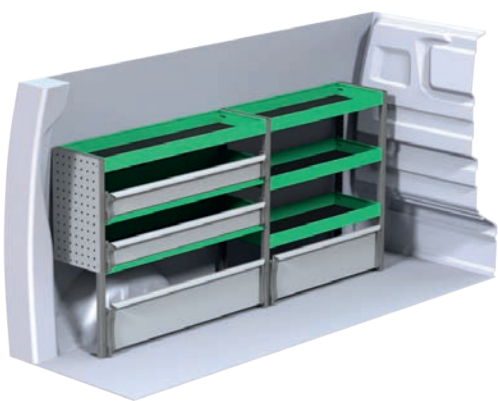
Recommended retail prices valid from 2018-01-01 until further notice. Mounting and VAT is excluded.
Suggested hours is the recommended mounting time for experienced retailers.



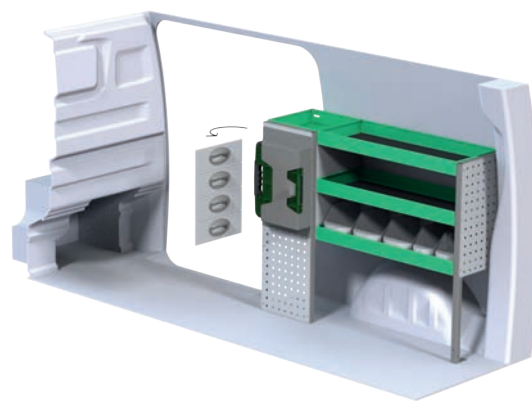
Art.No	LxDxH	Kg	Hr.	€
F41830	1878x300x890 mm	33	2,9	619,50



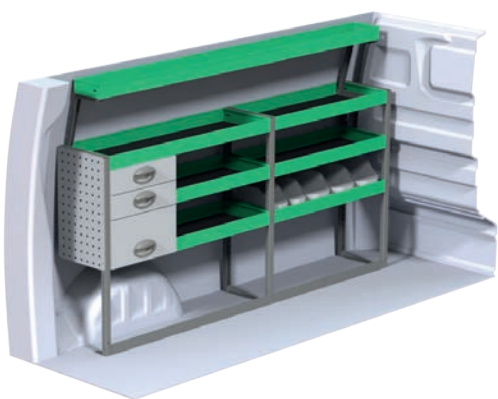
Art.No	LxDxH	Kg	Hr.	€
F41831	1116x300x890 mm	34	2,9	686,25



Art.No	LxDxH	Kg	Hr.	€
F41832	1878x300x890 mm	41	3,7	773,75



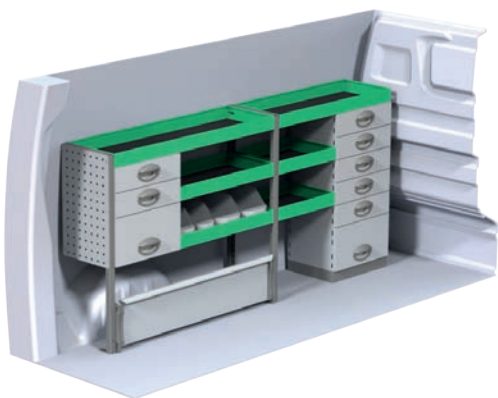
Art.No	LxDxH	Kg	Hr.	€
F41833	1116x300x890 mm	40	3,2	840,25



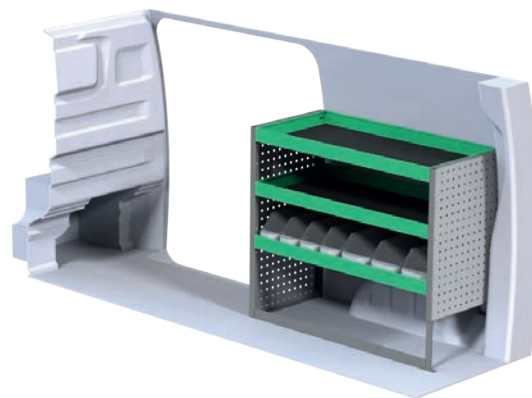
Art.No	LxDxH	Kg	Hr.	€
F41834	1878x300x890 mm	54	3,9	1 098,65



Art.No	LxDxH	Kg	Hr.	€
F41835	1116x300x890 mm	46	3,5	1 032,00



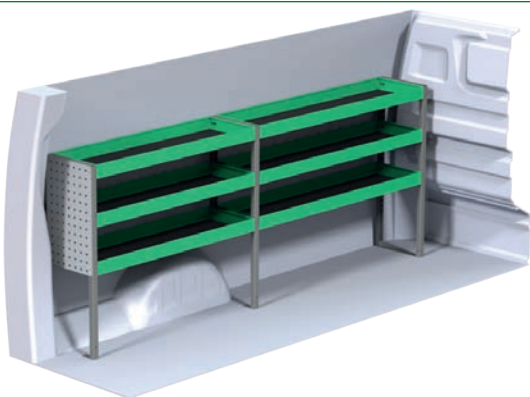
Art.No	LxDxH	Kg	Hr.	€
F41836	1878x300x890 mm	66	4,3	1 322,00



Art.No	LxDxH	Kg	Hr.	€
F41837	1061x470x890 mm	35	2,2	571,50

Toyota ProAce Long

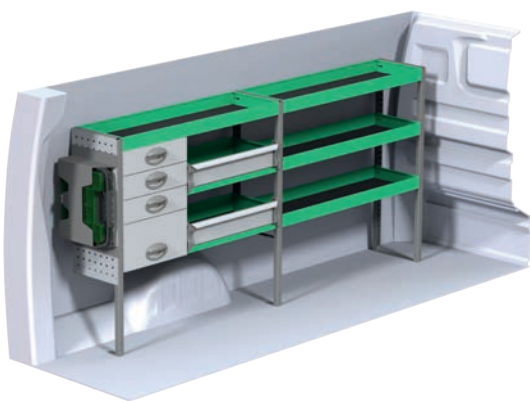
Recommended retail prices valid from 2018-01-01 until further notice. Mounting and VAT is excluded.
Suggested hours is the recommended mounting time for experienced retailers.



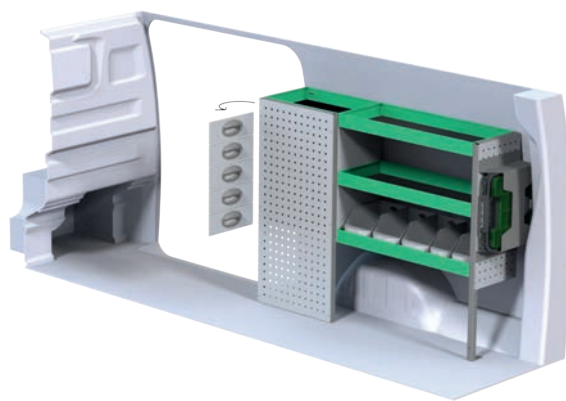
Art.No	LxDxH	Kg	Hr.	€
F41860	2269x300x890 mm	37	2,9	710,75



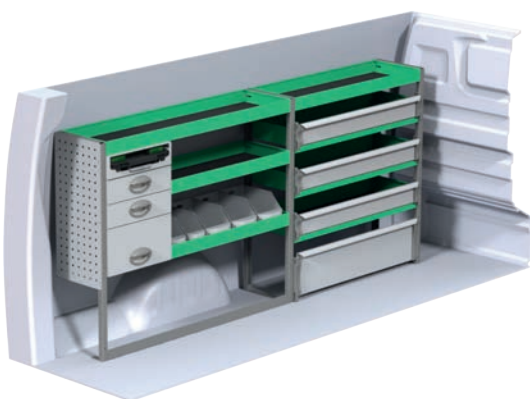
Art.No	LxDxH	Kg	Hr.	€
F41861	1286x300x1000 mm	47	2,9	811,50



Art.No	LxDxH	Kg	Hr.	€
F41862	2090x300x1000 mm	57	4,0	1 118,50



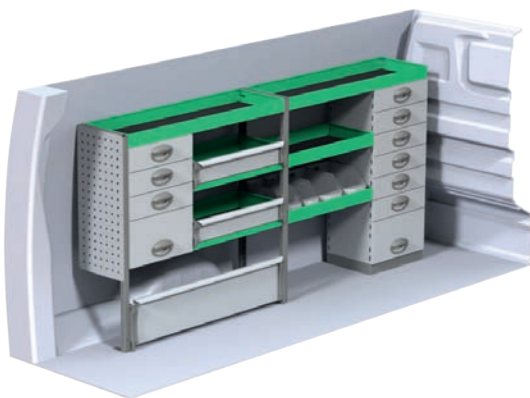
Art.No	LxDxH	Kg	Hr.	€
F41863	1286x300x1000 mm	54	3,2	957,25



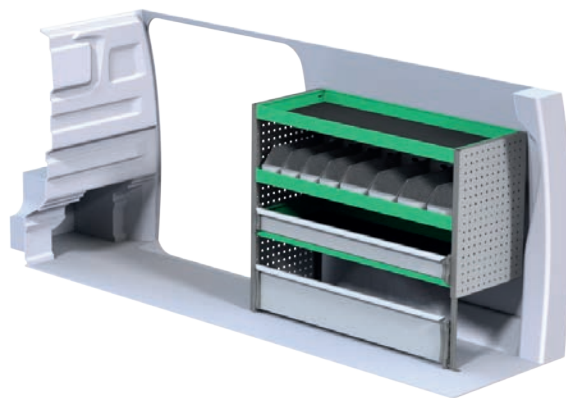
Art.No	LxDxH	Kg	Hr.	€
F41864	2179x300x1000 mm	49	4,0	1 308,75



Art.No	LxDxH	Kg	Hr.	€
F41865	1286x300x1000 mm	63	3,7	1 225,50



Art.No	LxDxH	Kg	Hr.	€
F41866	2058x300x1000 mm	80	4,3	1 575,00



Art.No	LxDxH	Kg	Hr.	€
F41867	1240x470x1000 mm	42	2,2	684,25

Information

- Load heavy low, obvious you think. But you should always remember this, store your load in a clever way and you will have less back problems and the vehicle will act much better and be safer on the road.
- If you have bulky packages on the floor make sure to use proper straps to retain them! It can save your life!!
- Remember that System Edström is only a tool for good order and safety in your vehicle, at the end of the day it is up to you how effective this tool will function in your every day life.
- When you equip your vehicle with the tools and spare parts you'll need, remember to PUT the items in place. If you just throw in place you can damage tools, parts and the interior.
- Use drawer inserts and plastic bins as much as possible, it will keep your stuff in place. It also avoids unnecessary noise and damage to tools/parts.
- Benefit from a quieter life by using plastic foam in the drawers, it also prevents damage to tools and parts.
- Rubber mats in the shelves are a matter of course for us. Again, it reduces noise and your tools and parts stay in place.

Now that you have chosen to have System Edström in your vehicle you have taken the first and most important step to make your mobile workshop safe and functional. From here on it is up to you how safe and functional your working place will be.

Remember;

You as the driver has the full responsibility if you or any one else is injured because the cargo is poorly secured. It is also your responsibility to make sure that the interior is mounted in the safest way possible whatever your choice of workshop, even if they are professionals with knowhow and long experience .

Make sure NOT to exceed the maximum payload of the vehicle.

Security, Environment & Quality

The company is certified according to SS-EN ISO 9001:2015 to secure the administrative quality and to give us the possibility to keep a high accuracy on deliverys.

Our products are tested in two ways, the first and most important is two crashtests, one (ECE 17:07) performed by Milbrook in England and another one performed by Valutec in France (INRS NS286).

Learn more about us on our homepage, www.edstrom.se.

All material used in System Edström can be recycled to 100%.

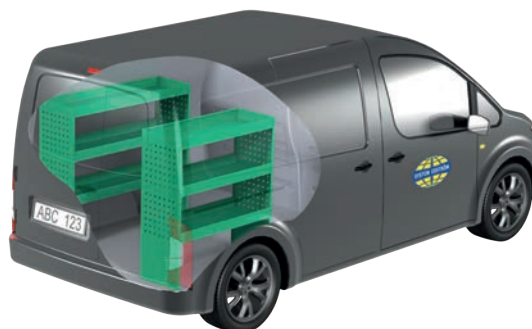
We are certified according to SS-EN ISO 14001:2015.

Universal

Recommended retail prices valid from 2018-01-01 until further notice. Mounting and VAT is excluded.
Suggested hours is the recommended mounting time for experienced retailers.



Extendable interior



Basic Kit



Art.No	LxDxH	Kg	Hr.	€
F11080	1210x700 mm	55	3,6	1 219,15



Art.No	LxDxH	Kg	Hr.	€
F3278	786x300x890 mm	15	1,9	250,50



Art.No	LxDxH	Kg	Hr.	€
F11082	1210x700 mm	61	3,6	1 293,25



Art.No	LxDxH	Kg	Hr.	€
F3282	999x300x890 mm	18	1,9	284,25



Art.No	LxDxH	Kg	Hr.	€
F11084	1210x700 mm	53	3,6	1 154,75



Art.No	LxDxH	Kg	Hr.	€
F3290	999x200x890mm	14	1,9	304,00

Universal

Recommended retail prices valid from 2018-01-01 until further notice. Mounting and VAT is excluded.
Suggested hours is the recommended mounting time for experienced retailers.



Sliding interior



Interior/load carrier



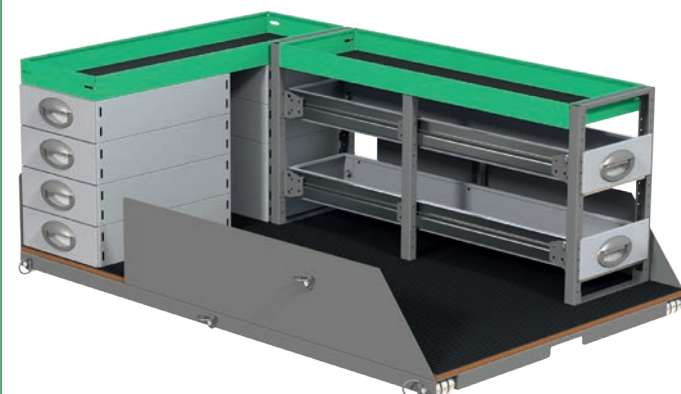
Art.No	LxDxH	Kg	Hr.	€
F11031	950x350x655 mm	47	3,6	968,50



Art.No	LxDxH	Kg	Hr.	€
F48080	930x1500x570 mm	59	0,8	1 451,25



Art.No	LxDxH	Kg	Hr.	€
F11033	1300x350x755 mm	62	3,6	1 176,50



Art.No	LxDxH	Kg	Hr.	€
F48081	930x1500x570 mm	85	1,2	1 963,00

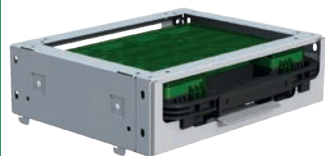


Art.No	LxDxH	Kg	Hr.	€
F11035	1650x350x590 mm	74	3,6	1 263,50



Art.No	LxDxH	Kg	Hr.	€
F48082	930x1500x570 mm	83	1,2	2 011,50

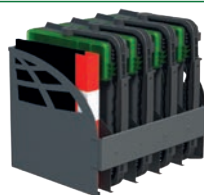
Accessories



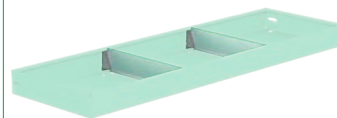
Cases



Case Brackets



Case/File Holder



Shelf Dividers



Drawer Inserts



Plastic Bins



Vice



Gas Bottle Holders



Universal hook



Cable/Hose Rack



Can/Tube Holder



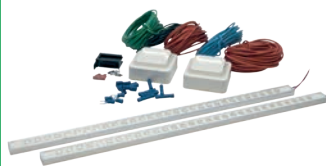
Case Support



Load Securing



First Aid



Lighting



Working Light



Tool Holders



Inverters



Ladder Holder



Fire Extinguisher

System Edström is crash-tested according to:



The kits include what you see in the drawing, rubber mats to all shelves and necessary installation parts.

We reserve the right to change prices and delivery terms without previous notification.

See us on internet: www.systemedstrom.com

Dealer